

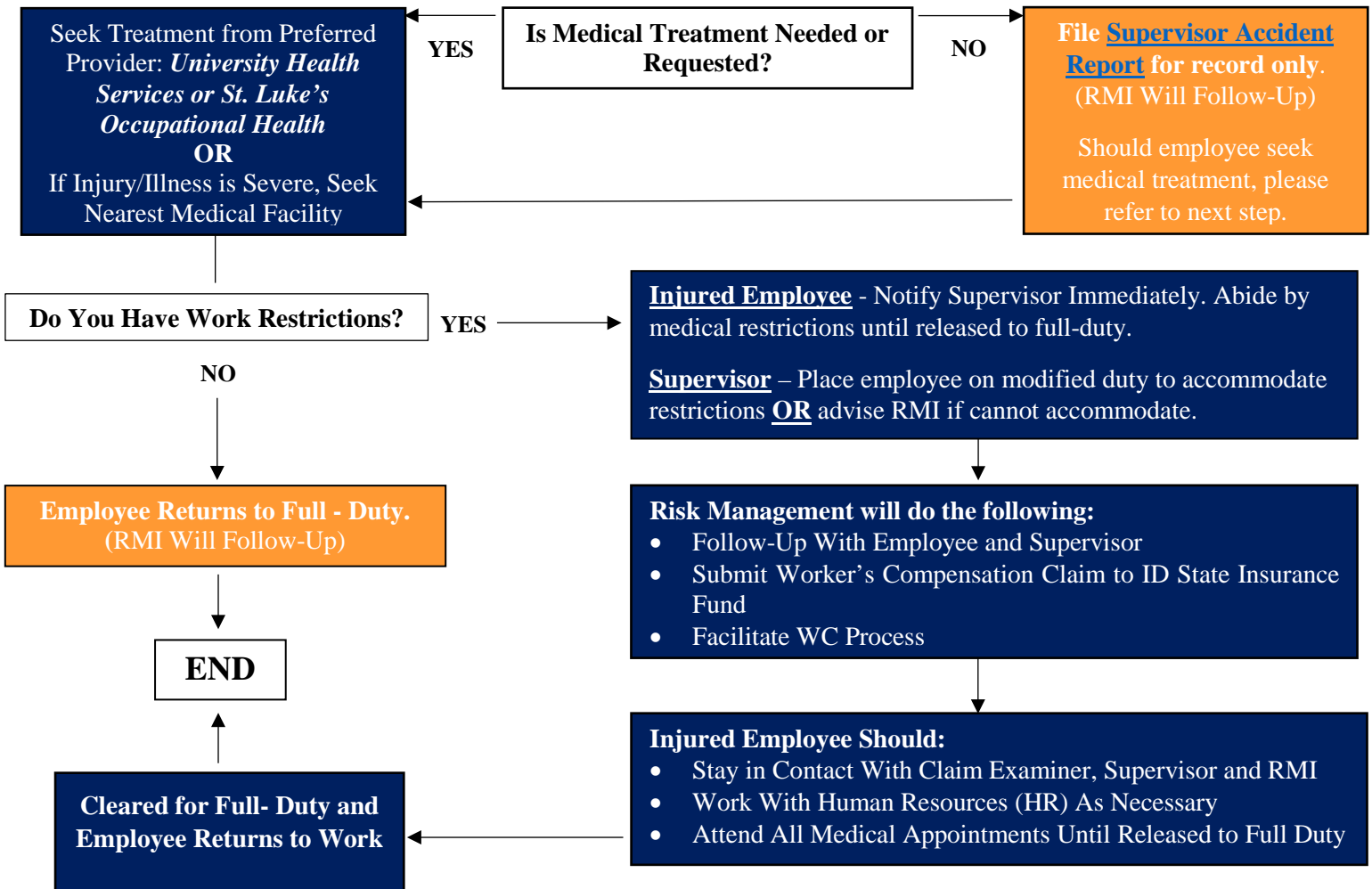


**BOISE STATE UNIVERSITY
WORKER'S COMPENSATION (WC)**

WORKPLACE INJURY OCCURS
If Medical Emergency, Call 911 Immediately
If life threatening or death occurs, contact Campus Security at (208) 426-6911

<u>INJURED EMPLOYEE</u>	<u>SUPERVISOR</u>
<ul style="list-style-type: none"> Notify Supervisor By End of Shift or Within 24 Hours When In Doubt, Get Checked Out 	<ul style="list-style-type: none"> Conduct Investigation and Take Corrective Action Report to Risk Mgmt. (RMI) within 48 hours utilizing the Supervisor Accident Report on our WC Reporting Portal. Website Address Below: https://my.dakotasoft.com/boisestate/proactivity/dt/form.asp

START HERE



CONTACT INFORMATION:

- Office of Risk Management and Insurance – Risk Manager (208) 426-3636 or Asst. Risk Manager (208) 426-5955
- University Health Services (Norco Building) – (208) 426-1459
- St. Luke's Occupational Health Clinic – Boise Location (208) 706-7500 or Meridian (208) 706-5447
- Human Resources – (208) 426 -1616



HEALTH SERVICES

medi | counseli illness

CAMPUS LOCATION

BELMONT S

ICHIGAN AV



Located behind the Rec Center



1529 Belmont Street Boise, ID

**Boise State University's
Workers' Compensation provider**

HEALTH SERVICES

- University's preferred medical provider for **work-related injuries**.

Urgent care available immediately and we will triage you in quickly.

CONTACT

PHONE:
208-426-1459

E-MAIL:
healthservices@boisestate.edu

HOURS

MONDAY, TUESDAY 8am-5pm

WEDNESDAY 10am-5pm

THURSDAY, FRIDAY 8am-5pm

Summer hours may vary

AFTER HOURS

EMERGENCY CARE:
St. Luke's Boise Emergency Room
190 East Bannock Street
Boise, ID 83712



Occupational Health Clinics – Treasure Valley

Appointments appreciated; same day care available for acute injuries.

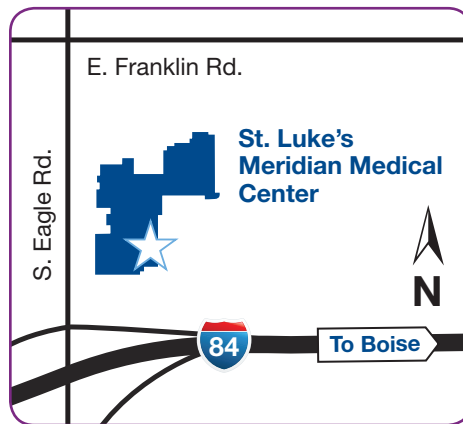
St. Luke's Boise

703 Americana Blvd., Suite 130
Boise, ID 83702
(208) 706-7500
Monday-Friday, 8 a.m.-5 p.m.



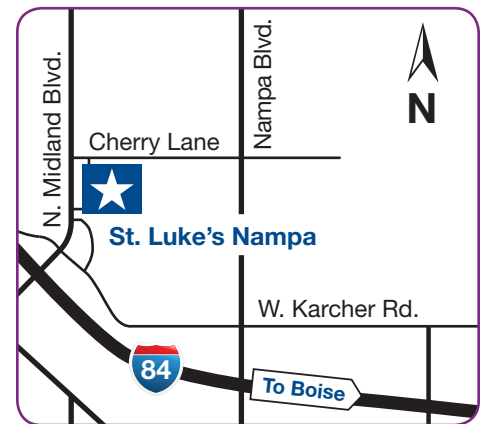
St. Luke's Meridian

520 S. Eagle Road, Suite 2213
Meridian, ID 83642
(208) 706-5447
Monday-Friday, 8 a.m.-5 p.m.



St. Luke's Nampa

9850 W. St. Luke's Drive, Suite 207
Nampa, ID 83687
(208) 505-2711
Monday-Friday, 8 a.m.-5 p.m.



Fruitland

St. Luke's Clinic – Family Medicine
1210 NW 16th Street
Fruitland ID 83619
(208) 452-8600
Monday-Friday, 8 a.m.-8 p.m.
Saturday, 9 a.m.-5 p.m.



Mountain Home

St. Luke's Elmore
840 N. 4th East
Mountain Home, ID 83647
(208) 580-5488
Monday-Friday, 8 a.m.-5 p.m.



After Hours and Emergency Locations

St. Luke's Eagle Urgent Care

3101 E. State Street, Eagle, ID 83616
(208) 473-3100
Monday-Friday, 7 a.m.-10 p.m.
Saturday-Sunday, 9 a.m.-10 p.m.

St. Luke's Boise Emergency Department

190 E. Bannock Street, Boise, ID 83712
(208) 381-2235
Open 24 hours/day

St. Luke's Meridian Emergency Department

520 S. Eagle Road, Meridian, ID 83642
(208) 706-1140
Open 24 hours/day

St. Luke's Nampa Emergency Department

9850 W. St. Luke's Drive, Nampa, ID 83687
(208) 505-2000
Open 24 hours/day

St. Luke's Elmore Emergency Department

895 N. 6th East, Mountain Home ID 83647
(208) 587-0530
Open 24 hours/day

Additional occupational health services available at our clinics include drug and alcohol testing, employment physicals and immunizations.

stlukesonline.org/occhealth

Clínicas de Salud Ocupacional (Occupational Health Clinics) – Treasure Valley

Se recomienda hacer cita; existe disponibilidad de atención inmediata para lesiones graves

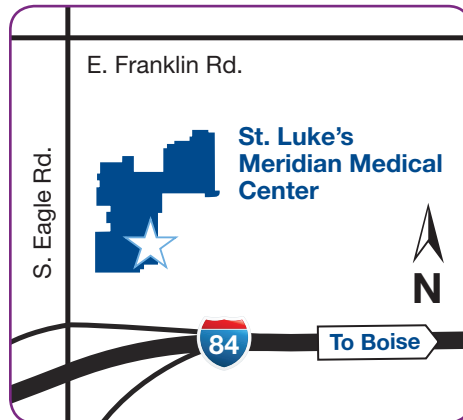
St. Luke's Boise

703 Americana Blvd., Suite 130
Boise, ID 83702
(208) 706-7500
Lunes a viernes, de 8 a.m.-5 p.m.



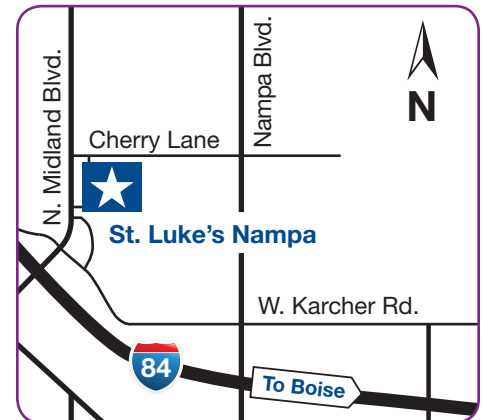
St. Luke's Meridian

520 S. Eagle Road, Suite 2213
Meridian, ID 83642
(208) 706-5447
Lunes a viernes, de 8 a.m.-5 p.m.



St. Luke's Nampa

9850 W. St. Luke's Drive, Suite 207
Nampa, ID 83687
(208) 505-2711
Lunes a viernes, de 8 a.m.-5 p.m.



Fruitland

St. Luke's Clinic – Family Medicine

1210 NW 16th Street
Fruitland ID 83619
(208) 452-8600
Lunes a viernes, de 8 a.m.-5 p.m.
Sábados, de 9 a.m.-5 p.m.



Mountain Home

St. Luke's Elmore

840 N. 4th East
Mountain Home, ID 83647
(208) 580-5488
Lunes a viernes, de 8 a.m.-5 p.m.



Atención fuera del horario laboral y centros de emergencia

St. Luke's Eagle Urgencias

3101 E. State Street, Eagle, ID 83616
(208) 473-3100
Lunes a viernes, de 7 a.m.-10 p.m.
Sábados-domingos, de 9 a.m.-10 p.m.

St. Luke's Boise Sala de Emergencias

190 E. Bannock Street, Boise, ID 83712
(208) 381-2235
Abierto las 24 horas del día.

St. Luke's Meridian Sala de Emergencias

520 S. Eagle Road, Meridian, ID 83642
(208) 706-1140
Abierto las 24 horas del día.

St. Luke's Nampa Sala de Emergencias

9850 W. St. Luke's Drive, Nampa, ID 83687
(208) 505-2000
Abierto las 24 horas del día.

St. Luke's Elmore Sala de Emergencias

895 N. 6th East, Mountain Home ID 83647
(208) 587-0530
Abierto las 24 horas del día.

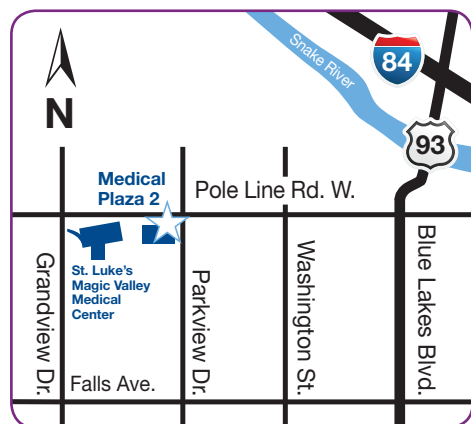
Ofrecemos servicios adicionales de salud ocupacional en nuestras clínicas, entre los que se incluyen: exámenes de drogas y alcohol, exámenes físicos para empleo y vacunas.

Occupational Health Clinics – Magic Valley

Same day care available for acute injuries; appointments appreciated.

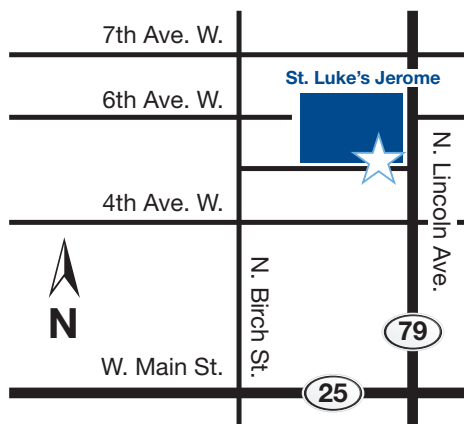
St. Luke's Magic Valley

625 Pole Line Road W., Suite 1B
Twin Falls, ID 83301
(208) 814-8100
Monday-Friday, 8 a.m.-6 p.m.



Jerome

115 5th Avenue W.
Jerome, ID 83338
(208) 814-9840
Monday-Friday, 8 a.m.-5 p.m.

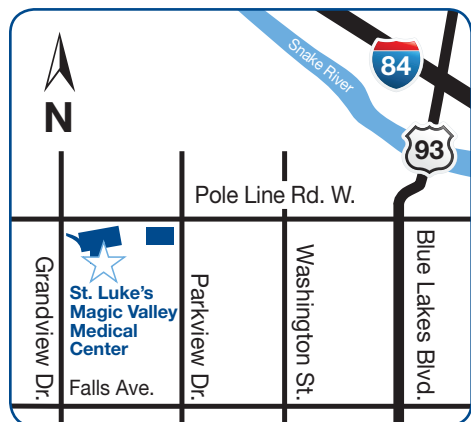


After Hours and Emergency Locations

St. Luke's Quick Care

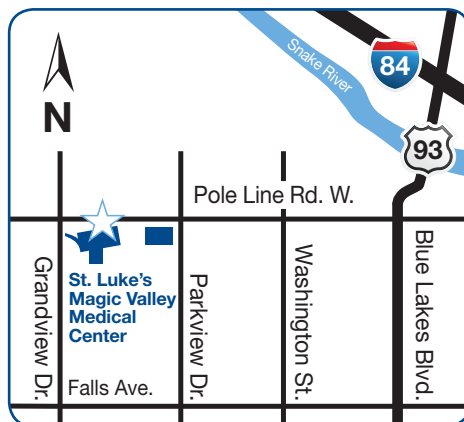
Located at St. Luke's Magic Valley

775 Pole Line Road W., Suite 103
Twin Falls, ID 83301
(208) 814-8375
Monday-Friday, 6-7 p.m.
Saturday-Sunday, 9 a.m.-4 p.m.



St. Luke's Magic Valley Emergency Department

801 Pole Line Road W.
Twin Falls ID 83301
(208) 814-1400
Open 24 hours/day



St. Luke's Jerome Emergency Department

709 N. Lincoln Avenue
Jerome, ID 83338
(208) 324-4301
Open 24 hours/day

Additional occupational health services available at our clinics include drug and alcohol testing, employment physicals and immunizations.